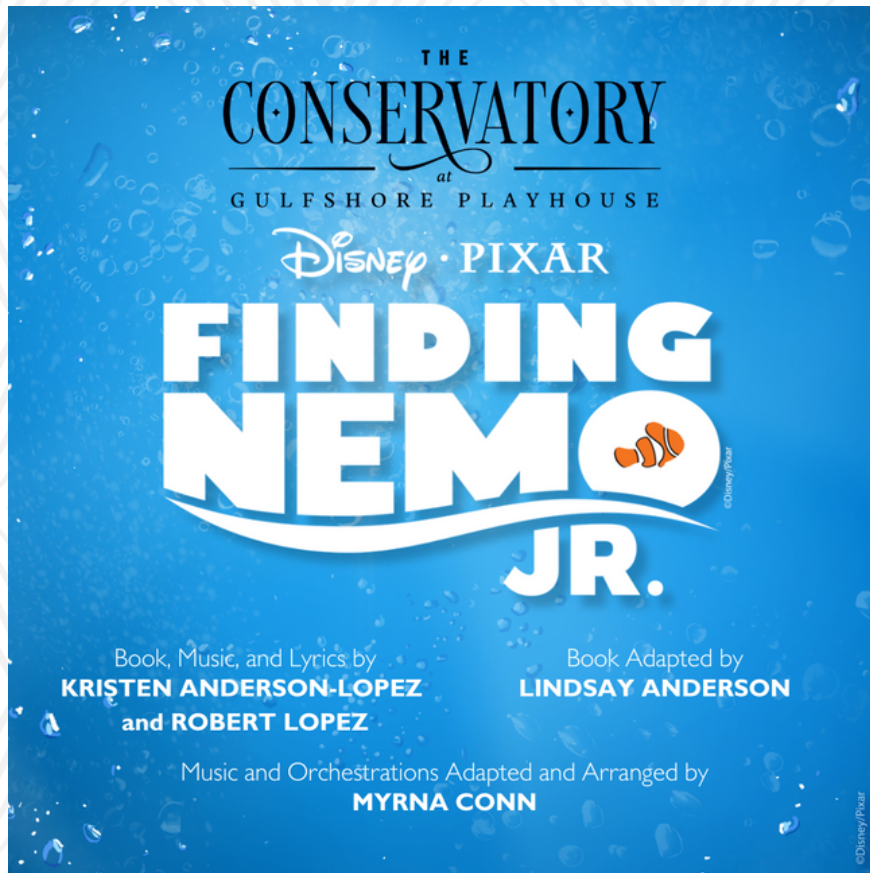




GULFSHORE PLAYHOUSE

Kristen Coury, CEO & Producing Artistic Director

PERFORMANCE GUIDE TO



Scenic Designer

NATALIE ROSE MABRY

Costume Designer

JENNIFER BRONSTED

Lighting Designer

ELIZABETH KNUDSON

Sound Designer

CORDARIOUS COX

Production Stage Manager

MIKAYLA STASNY

Director of Production

RAY INKEL

Music Director

LISA FEDERICO

Choreographer

VASTHY MOMPOINT

COO & Managing Director

JOEL MARKUS

CEO & Producing Artistic Director

KRISTEN COURY

Director of Education

STEVEN CALAKOS

Directed by

JOHN PERINE

TABLE OF CONTENTS

TITLE PAGE.....	1
TABLE OF CONTENTS.....	2
ABOUT THE SHOW.....	3
ABOUT THE DIRECTOR.....	4
ABOUT GULFSHORE PLAYHOUSE EDUCATION.....	4
MARLIN'S JOURNEY.....	5
ABOUT THE GREAT BARRIER REEF.....	6
THEMES IN FINDING NEMO JR.....	7
FURTHER VIEWING AND READING.....	8
ACTIVITY SHEET.....	9

ABOUT THE SHOW

Marlin lives in the Great Barrier Reef with his kid Nemo, who longs to explore the world beyond their anemone home. But when Nemo is captured and taken to Sydney, Marlin faces his fears and sets off on an epic adventure across the ocean. With the help of lovable characters such as optimistic Dory, laid-back sea turtle Crush, and the supportive Tank Gang, Marlin and Nemo both overcome challenges on their journey to find each other and themselves.

SCREEN TO STAGE: A HISTORY

Disney and Pixar's *Finding Nemo*

Disney and Pixar's *Finding Nemo* debuted as an animated film in the summer of 2003, marking it as Pixar's first ever Summer release. *Finding Nemo* went on to win the Academy Award for Best Animated Feature. It was the second-highest grossing film of 2003, earning \$867 million and was the 8th highest grossing film of all time at that point. In 2016, Disney and Pixar followed up the successful film with *Finding Dory*.

Disney and Pixar's *Finding Nemo -- The Musical*

Disney and Pixar's *Finding Nemo--The Musical* opened at Walt Disney World's Animal Kingdom in January of 2007 with music composed by Kristen Anderson-Lopez and Robert Lopez (who went on to write music for Disney's *Frozen* and *Frozen II*), using dialogue from the original film. The park musical played its final performance on March 15, 2020 when Walt Disney World shut down due to the impact of COVID-19. However, a revamped and shortened version, *Finding Nemo: The Big Blue... and Beyond!* opened in June of 2022 as part of Walt Disney World Resort's 50th Anniversary Celebration.

Disney and Pixar's *Finding Nemo Jr.*

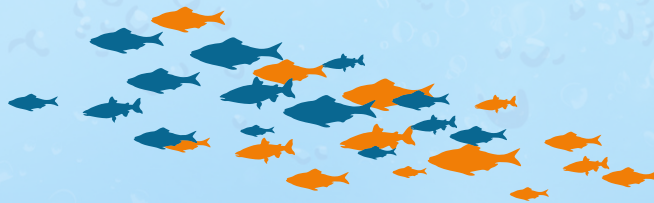
Gulfshore Playhouse Education is presenting Disney and Pixar's *Finding Nemo Jr.*, a 60-minute adaptation of the 30-minute park musical. This production uses most of the songs from the original musical and features an expanded script adapted by Lindsay Anderson to tie in more of the story from the original film.

ABOUT THE DIRECTOR



John Perine is a director, performer, playwright, and educator originally from the Nashville, Tennessee area, and is now a full-time Education Associate at Gulfshore Playhouse. John earned his BFA and MFA in Theatre for Young Audiences from Samford University and the University of North Carolina at Greensboro, respectively. He has additionally worked professionally as a teaching artist with The Rose Theater in Omaha, Nebraska, The Virginia Samford Theatre in Birmingham, Alabama, and Lexington Children's Theatre in Lexington, Kentucky. In the fall, John directed *Winnie the Pooh Kids* in the inaugural partnership with the Golisano Children's Museum of Naples. Prior to arriving at Gulfshore Playhouse, notable directing credits

include *Peter and the Starcatcher* (top three nominee for Best Director of the Decade and Best Musical of the Decade by BroadwayWorld Birmingham), as well as Kate DiCamillo's *Flora & Ulysses* for the North Carolina Theatre for Young People and the world premiere of his play *icarus x apollo* for University of North Carolina at Greensboro's Centennial celebration. More about John's work can be found at www.johnperine.com

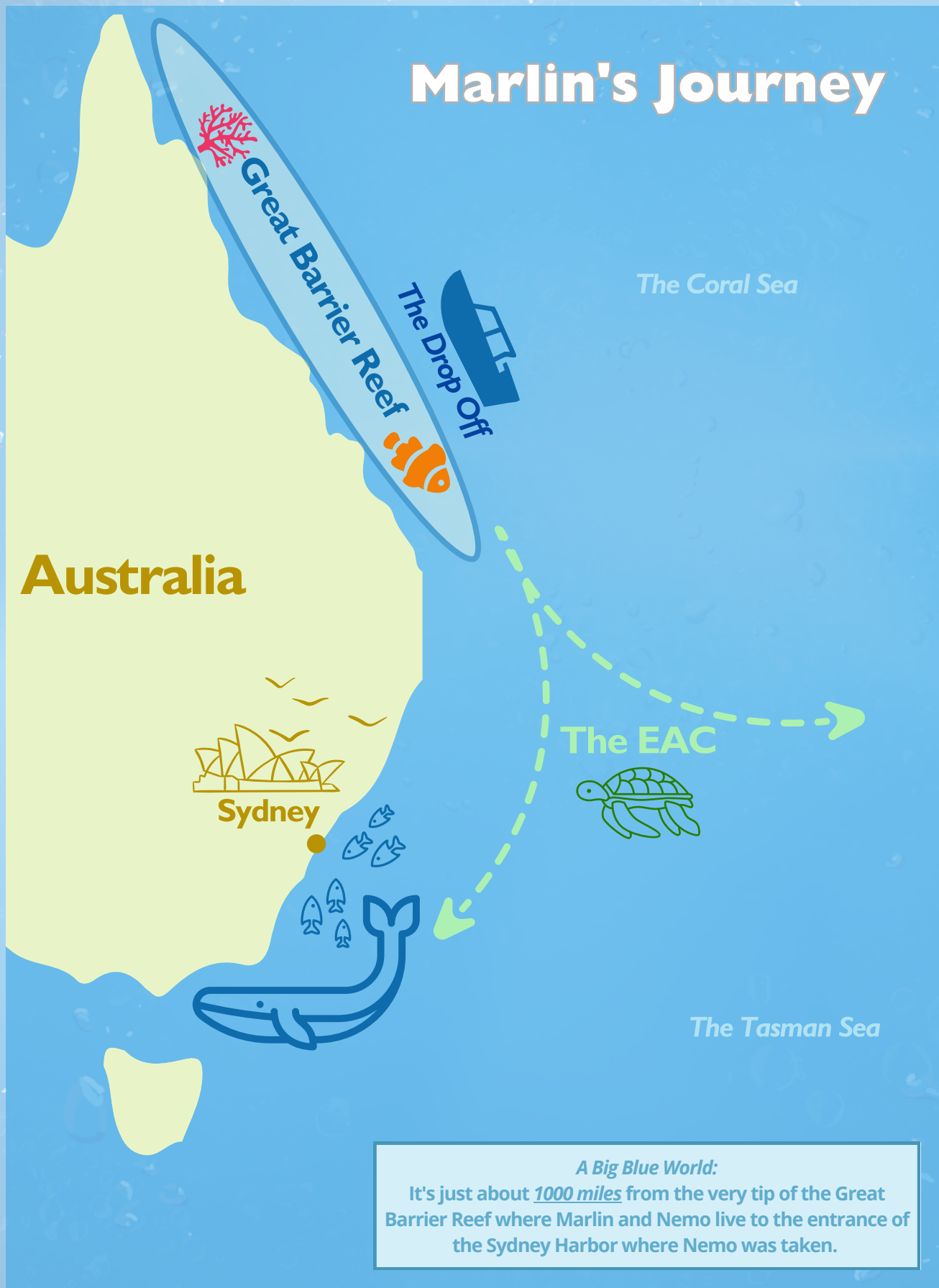


ABOUT GULFSHORE PLAYHOUSE EDUCATION

Gulfshore Playhouse Education is a vital component of the Playhouse's mission, providing programs aimed at enhancing the lives of children, teens, and students of all ages. Each offering provides real-life skills and learning experiences that are invigorating, nurturing, and readily accessible to every member of our community, thanks to our scholarships and reduced-price programming for our region's most deserving schools.

From in-school residencies and pre-professional theatre training to community partnerships, audience engagement, and student matinees – our goal is to inspire creativity, encourage self-expression, and support the blossoming of self-confidence, collaboration, and a deep appreciation for the arts.

Marlin's Journey



A Big Blue World:
It's just about 1000 miles from the very tip of the Great Barrier Reef where Marlin and Nemo live to the entrance of the Sydney Harbor where Nemo was taken.

About the Great Barrier Reef

Located off the northern coast of Australia, the Great Barrier Reef covers a square area of around 135,000 square miles. It is made up of over 2,000 individual reefs, and is home to over 450 species of coral, sponges, and crustaceans, over 1,500 species of fish and close to two dozen species of birds. In 1981, the Great Barrier Reef was declared a UNESCO World Heritage Site.



A relatively healthy area of the reef



An area of the reef that has been severely bleached

Currently, the reef is dying at an astounding rate. This is due to several things. One of the primary causes is coral bleaching, damage and discoloration of the coral caused by climate change. As the water temperature rises, the coral has a more and more difficult time surviving. The reef has also become an increasingly popular tourist attraction meaning more boats are travelling through it each year. More people are also fishing at the reef, which can lead to overfishing. Invasive species, like the Crown-of-Thorns Starfish have also started to take over the reef. They destroy habitats and make food and other resources scarcer.

What Can You Do?

There is a lot you can do at home that will help save the planet! Conserve energy by walking or riding your bike whenever possible, and by turning off lights when they are not being used. Save water by taking shorter showers and turning the water off when brushing your teeth. You can learn more about climate change and find ways to help by visiting www.climatekids.nasa.gov!

Themes in *Finding Nemo Jr.*

FAMILY

Finding Nemo Jr. features a large cast of young fish and their parents, with Nemo and Marlin at the center. Marlin could be considered overly cautious in regard to Nemo, and it causes strain and conflict in their relationship. As their stories play out, Nemo and Marlin meet other creatures that begin to prove that "family" goes beyond the one that you are born into and pushes them to value the family they have.

What are your duties as a parent or child? Who are the people in your life that feel like "family," even though you aren't related?

PERSEVERANCE

When Marlin sets out on his journey to find Nemo, traveling beyond his home in the Great Barrier Reef is something that he doesn't think he can do. However, with the help of his new friend Dory, Marlin learns that sometimes when faced with a challenge, all you have to do is "Just Keep Swimming."

Have you ever encountered a task that you thought was too difficult to complete? How did that make you feel? What steps did you take in order to face that challenge?

INDIVIDUALITY

The ocean is home to variety of sea creatures, and *Finding Nemo Jr.* gives us a glimpse into diversity of that world. Nemo is born with a "lucky fin," which makes them different from most of the other fish around them. One could say that *Finding Nemo* is named for Marlin's search for his kid, but Nemo is also finding himself.

What is something that sets you apart from your peers? In what ways does that affect the way that you experience the world? How have these experiences shaped your sense of self?

Further Viewing and Reading



Where The Wild Things Are (2009)

In this film adaptation of Maurice Sendak's classic children's book, an apathetic and unhappy boy named Max escapes to a fantasy world where he is the King of the Wild Things.



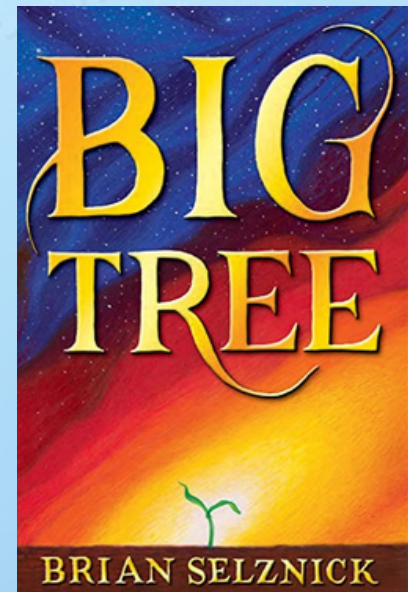
The Little Prince (2015)

A little girl lives in a very grown-up world with her mother, who tries to prepare her for it. Her neighbor, the Aviator, introduces the girl to an extraordinary world where anything is possible, the world of the Little Prince.



Not Quite Narwhal by Jessie Sima

In this picture book by Jessie Sima, Kelp has been living happily in the sea with his family of narwhals until one day he learns that he is actually a unicorn.



Big Tree by Brian Selznick

This book follows two seeds that must leave their Mother Tree after a fire. This is the latest book from Brian Selznick, an author renowned for his beautiful illustrations and well-crafted stories.

In its healthiest areas, the Great Barrier Reef is one of the most vibrant and colorful environments on the planet. As you color in the Reef, take note of what different creatures you find. Do you recognize any of them from our show?

